

ENDORSEMENT PAGE

This structure plan is prepared under the provisions of the City of Cockburn Local Planning Scheme No. 3.

IT IS CERTIFIED THAT THE LOT 27, 28 & 29 ROCKINGHAM ROAD MUNSTER STRUCTURE PLAN WAS APPROVED BY RESOLUTION OF THE WESTERN AUSTRALIAN PLANNING COMMISSION ON:

30 July 2007

In accordance with Schedule 2, Part 4, Clause 28 (2) and refer to Part 1, 2. (b) of the *Planning and Development (Local Planning Schemes) Regulations 2015*.

Date of Expiry:

19 October 2035

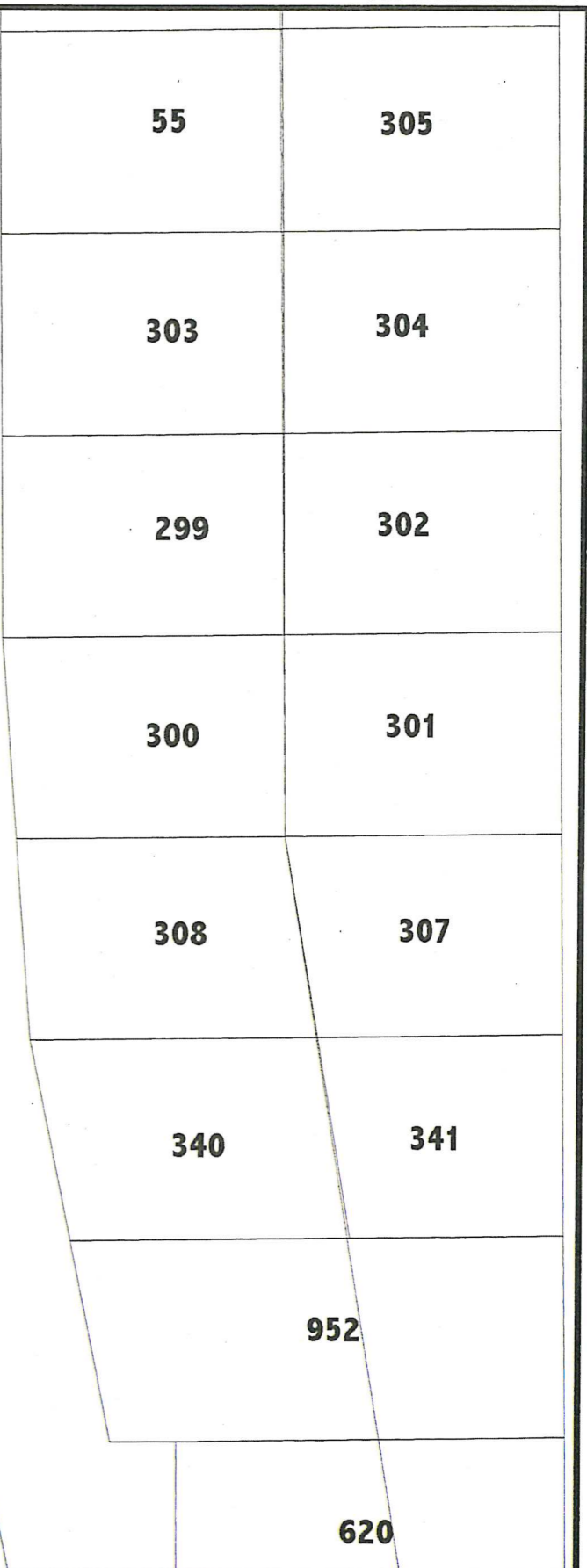
**CITY OF COCKBURN
STRUCTURE PLAN
(Delegation)**
This Structure Plan was adopted by Council on 5 / 09 / 14

Signed _____
PP DIRECTOR OF PLANNING & DEVELOPMENT

File No: 110/109 & SP14/16 (Previously 9686)

This Structure Plan was endorsed by the Western Australian Planning Commission on ___/___/___

Signed NA (clause 6.2.14.2 of TSS)
DIRECTOR OF PLANNING & DEVELOPMENT



It is certified that this Structure Plan was approved by resolution of the Western Australian Planning Commission on 30 / 07 / 2007

This Structure Plan expires on 19/10/2035

Signed _____
PP Director, Planning and Development

File No. 110/109

City of Cockburn logo and 'Wetlands to waves' slogan.

North arrow (GNA 807) and scale bar (0 to 20m, SCALE 1:1,000).

Legend:

- Structure Plan Boundary
- Orange box Residential R40
- Indicative Road Layout/ Reciprocal Rights of Access

Note: In the event of a strata development, the road widths may be reduced (in accordance with SPP 3.1; R-Codes).

Original Structure Plan prepared by Burgess Design Group. (Date: 18/1/07 Drawing No.: NAT MUN SP)

**LOCAL STRUCTURE PLAN
MUNSTER**
LOTS 27, 28, 29 ROCKINGHAM ROAD, MUNSTER