

STRUCTURE PLAN

LOTS 18 & 19 GAEBLER RD
AUBIN GROVE

Note: THIS STRUCTURE PLAN
RELATES ONLY TO LOTS 18 & 19
GAEBLER ROAD, AUBIN GROVE

LEGEND

-  Subject Land
-  Proposed Dual Use Paths
-  Pedestrian Pathway
-  Residential R40 Lots
-  Restricted Use Medical Centre and/or Restricted Use Child Care Centre
-  Public Open Space
-  Modification to Structure Plan



NICHOLSON ROAD DEVELOPMENT TRUST : CLIENT
1:1,500 : SCALE
18 MARCH 2005 : DATE
2821-2-001.pl : PLAN No
A : REVISION
M. BANCROFT : PLANNER
A. DOBBS : DRAWN

Base data supplied by Water Corporation

Projection MGA50

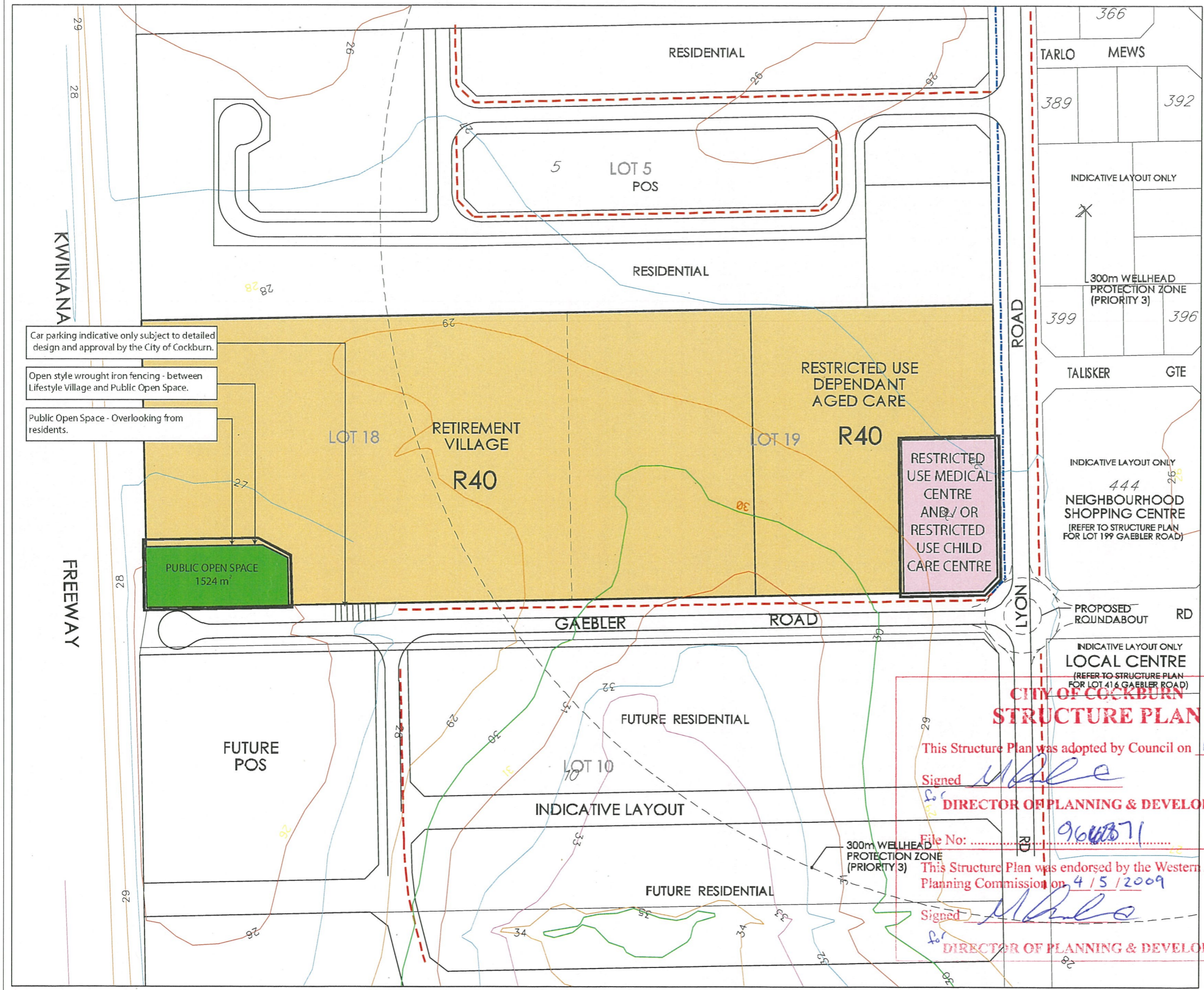
Areas and dimensions shown are subject to final survey calculations. All cartogways are shown for illustrative purposes only and are subject to detailed engineering design.

The concepts presented in this plan remain the © copyright of KOLTASZ SMITH. No copies in whole or in part may be made without KOLTASZ SMITH permission.

SOURCE



koltasz smith
DEVELOPMENT CONSULTANTS
TOWN PLANNERS · PROJECT MANAGERS
PERTH Tel. (08) 9486 2222 Email: perth@ksap.com.au



Car parking indicative only subject to detailed design and approval by the City of Cockburn.

Open style wrought iron fencing - between Lifestyle Village and Public Open Space.

Public Open Space - Overlooking from residents.

This Structure Plan was adopted by Council on 13/11/2008

Signed *Wale*

DIRECTOR OF PLANNING & DEVELOPMENT

File No: 966871


This Structure Plan was endorsed by the Western Australian Planning Commission on 4/5/2009

Signed *Wale*

DIRECTOR OF PLANNING & DEVELOPMENT

LOTS 18 & 19 GAEBLER ROAD, AUBIN GROVE PROPOSED STRUCTURE PLAN

FIGURE
Figure 3



TAYLOR BURRELL BARNETT
Town Planning and Design
187 Roberts Road Subiaco
Western Australia 6008
Telephone: (08) 9382 2911
Facsimile: (08) 9382 4586
admin@tbbplanning.com.au

ORIGINALLY ADOPTED BY COUNCIL 18/11/05
 ENDORSED BY WAPC 30/3/05
 MODIFICATION ADOPTED BY COUNCIL 13/11/08
 MODIFICATION ENDORSED BY WAPC 4/5/09