

**CITY OF COCKBURN  
STRUCTURE PLAN**

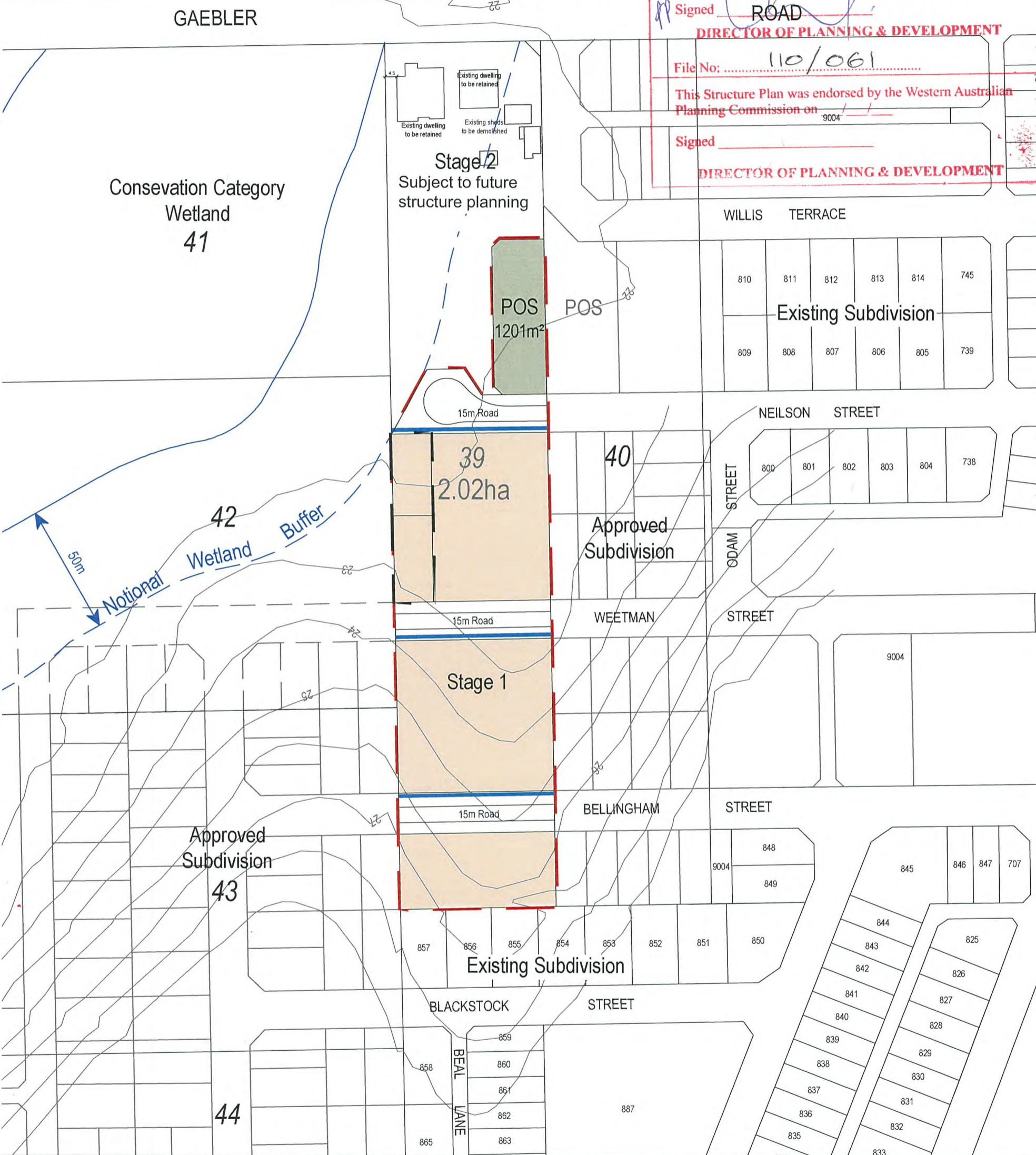
This Structure Plan was adopted by Council on 11 / 09 / 14

Signed \_\_\_\_\_  
**DIRECTOR OF PLANNING & DEVELOPMENT**

File No: 110/061

This Structure Plan was endorsed by the Western Australian  
Planning Commission on \_\_\_\_\_

Signed \_\_\_\_\_  
**DIRECTOR OF PLANNING & DEVELOPMENT**

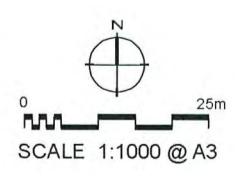


# PROPOSED VARIATION TO LOCAL STRUCTURE PLAN

## ORIGINAL LOT 39 GAEBLER ROAD, HAMMOND PARK

### VARIATION 1: LOT 9002 WEETMAN STREET HAMMOND PARK

- LEGEND**
- LOCAL STRUCTURE PLAN AREA (ORIGINAL LOT 39 GAEBLER ROAD, HAMMOND PARK)
  - EXISTING CADASTRAL BOUNDARY
  - FOOTPATHS
  - VARIATION TO STRUCTURE PLAN (LOT 9002)
  - ZONES / RESERVES**
  - RESIDENTIAL R25 ZONE
  - PUBLIC OPEN SPACE (POS)



**Plan 1**

**GRAY & LEWIS**  
**LAND USE PLANNERS**  
Suite 5, 2 Hardy Street  
South Perth, WA 6151  
T (08) 9474 1722  
F (08) 9474 1172  
perth@graylewis.com.au