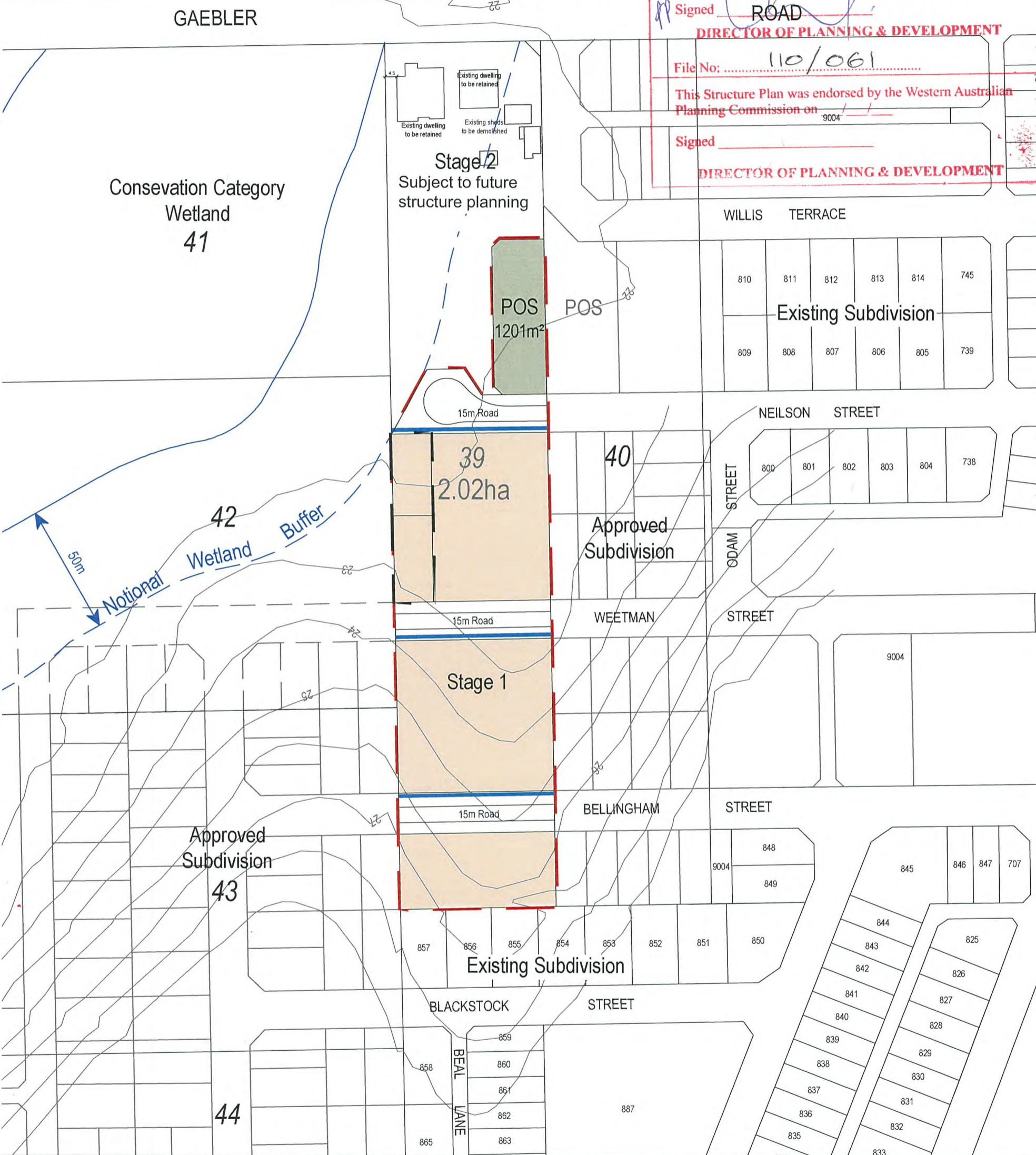
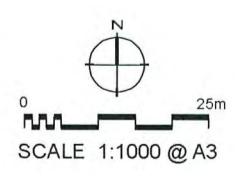


**CITY OF COCKBURN  
STRUCTURE PLAN**  
*variation*  
 This Structure Plan was adopted by Council on 11 / 09 / 14  
 Signed \_\_\_\_\_  
**DIRECTOR OF PLANNING & DEVELOPMENT**  
 File No: 110/061  
 This Structure Plan was endorsed by the Western Australian  
 Planning Commission on \_\_\_\_\_  
 Signed \_\_\_\_\_  
**DIRECTOR OF PLANNING & DEVELOPMENT**



**PROPOSED VARIATION TO  
LOCAL STRUCTURE PLAN**  
 ORIGINAL LOT 39 GAEBLER ROAD, HAMMOND PARK  
 VARIATION 1: LOT 9002 WEETMAN STREET  
 HAMMOND PARK

- LEGEND**
- LOCAL STRUCTURE PLAN AREA (ORIGINAL LOT 39 GAEBLER ROAD, HAMMOND PARK)
  - EXISTING CADASTRAL BOUNDARY
  - FOOTPATHS
  - VARIATION TO STRUCTURE PLAN (LOT 9002)
  - ZONES / RESERVES**
  - RESIDENTIAL R25 ZONE
  - PUBLIC OPEN SPACE (POS)



**Plan 1**  
  
**GRAY & LEWIS**  
**LAND USE PLANNERS**  
 Suite 5, 2 Hardy Street  
 South Perth, WA 6151  
 T (08) 9474 1722  
 F (08) 9474 1172  
 perth@graylewis.com.au